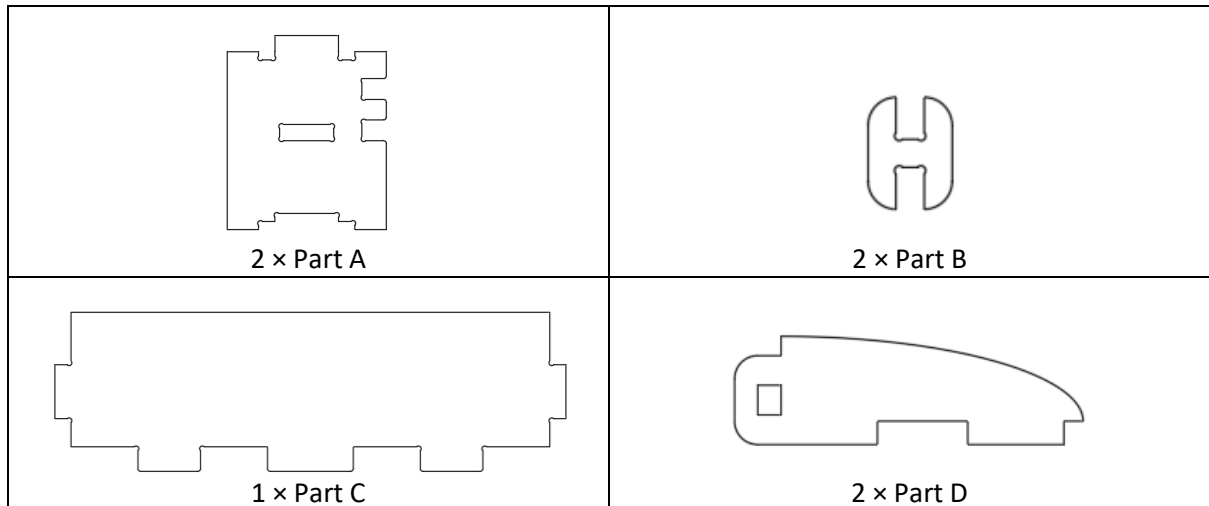


'Middle/Bottom Shelf' Assembly Guide

Parts

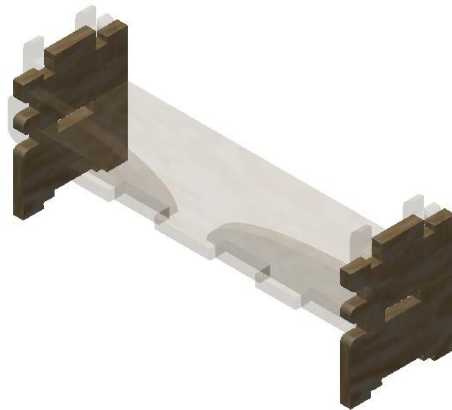


Instruction Guide

It is optional to reinforce parts together using wood glue or screws.

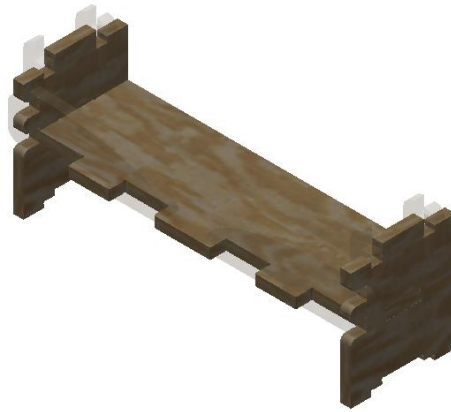
Parts displayed in the instruction manual are of the small size. All sizes, however, fit in the same manner and follow the same assembly procedure

Starting Point



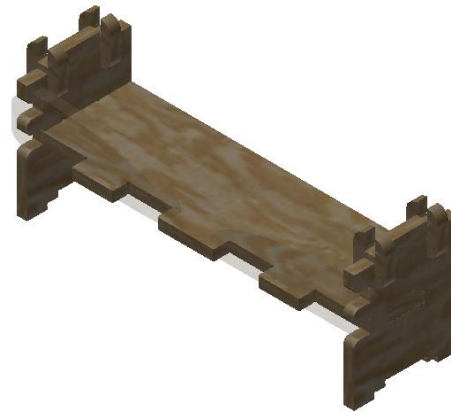
Step 1

Slot Part C into both slots of Part A



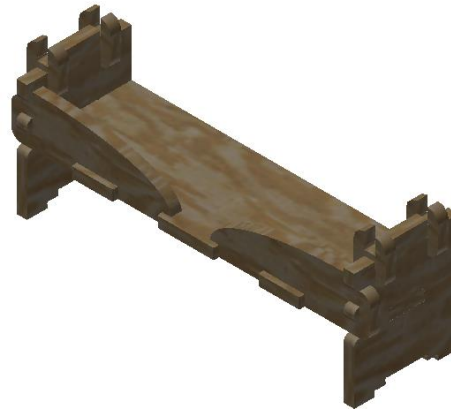
Step 2

Slot the Part Bs into the top small slots of both Part As



Step 3

Slot both Part Ds into the backs of Part C and both Part As



Step 4

If this is the first middle/bottom shelf you have purchased, the product is ready for you to place a top shelf on top of the product. If you are using this to build upon a shelf you have built previously, remove your top shelf, place your newly assembled middle/bottom shelf where the top shelf initially was and then place the top shelf on top of your newly assembled middle/bottom shelf

